
Mark Ambtman | Landscape Architect

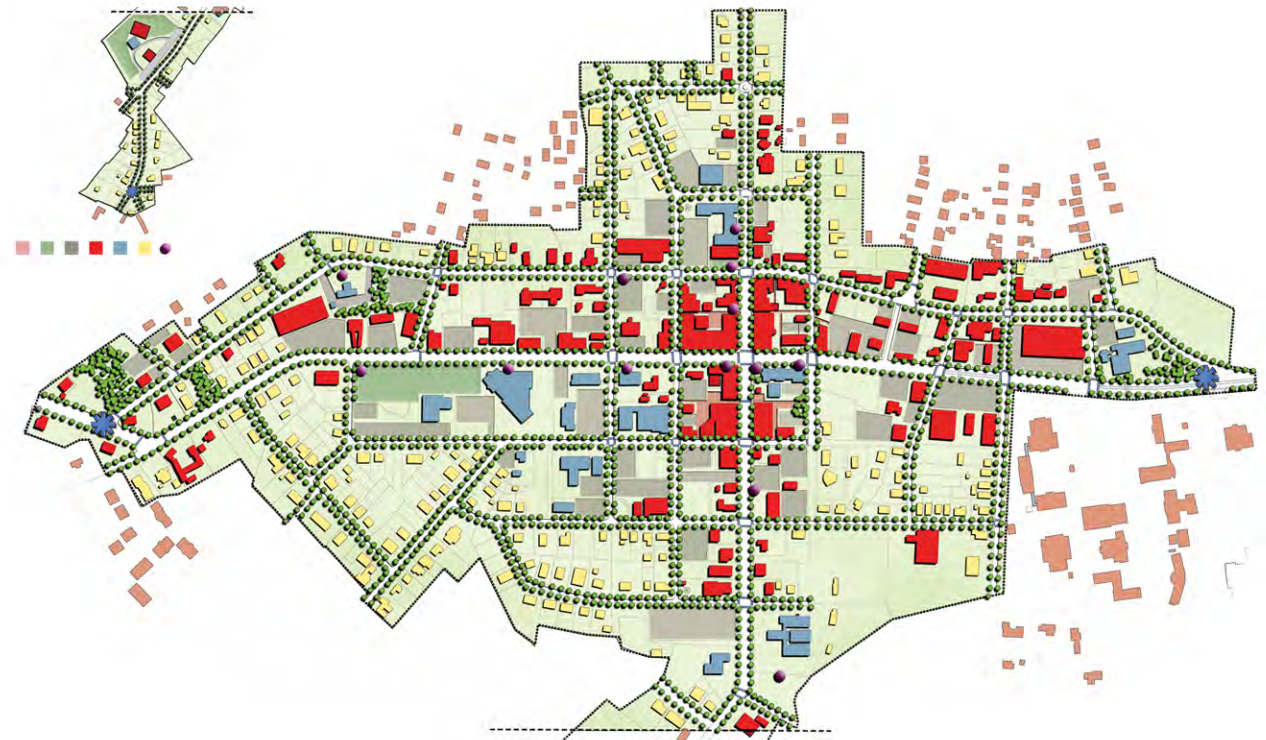
p o r t f o l i o

Tabor Manor | St. Catharines, ON
(MEP Design Inc.)



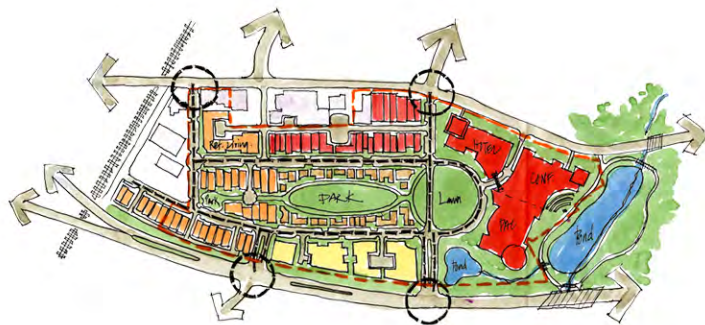
City of Brevard Downtown Master Plan | Brevard, NC
(Melrose Design Group, PA)

A scope of 230 acres this revitalization project focused on pedestrian and vehicular connectivity. In addition we explored opportunities to create a consistent identity for the city through signage, streetscape furniture and landscaping. Several city properties were also designed as pocket parks and local destinations.



Seventh Avenue Village | Hendersonville, NC
(Creative Development Solutions, PA)

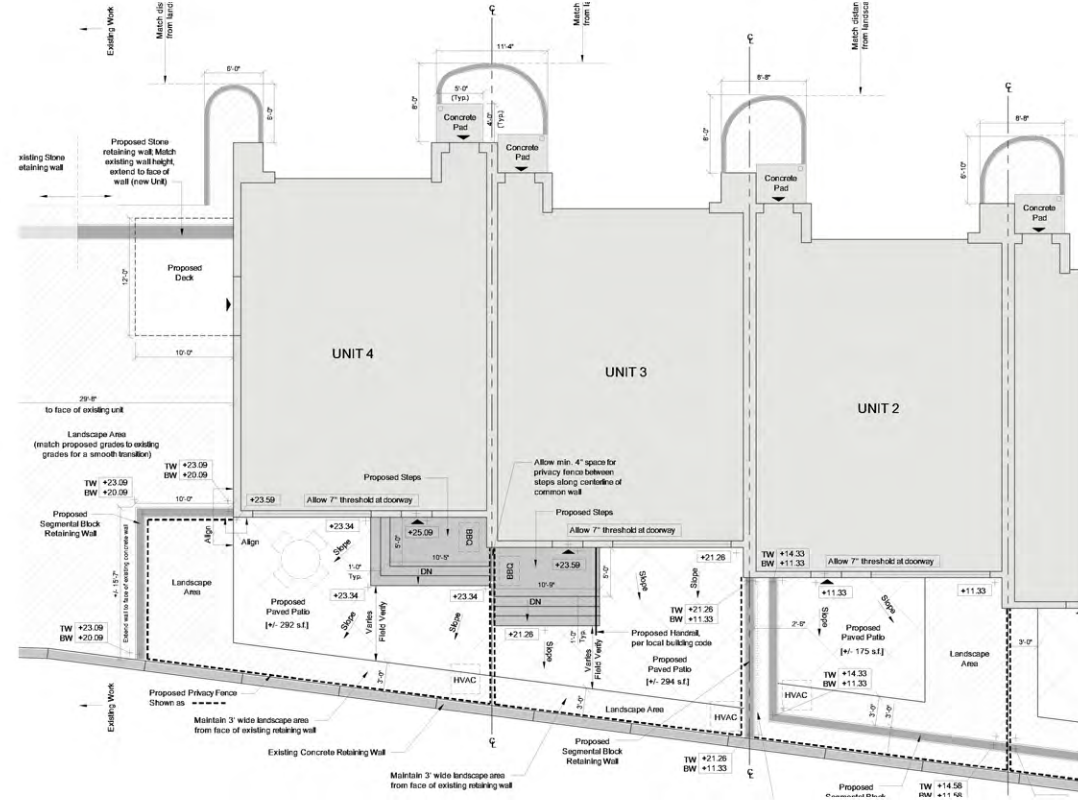
20 Acre Urban Village Concept plan in the heart of the historic 7th Avenue District including a Performing Arts Center, Hotel / Conference Center, single and multi-family residences, retail and commercial space. Conceptual Master Plan only.



Design Charette Concept



Townhomes | Pittsburgh, PA
(MA-LA)



Forest Lakes | Hot Springs, AR
(Creative Development Solutions, PA)

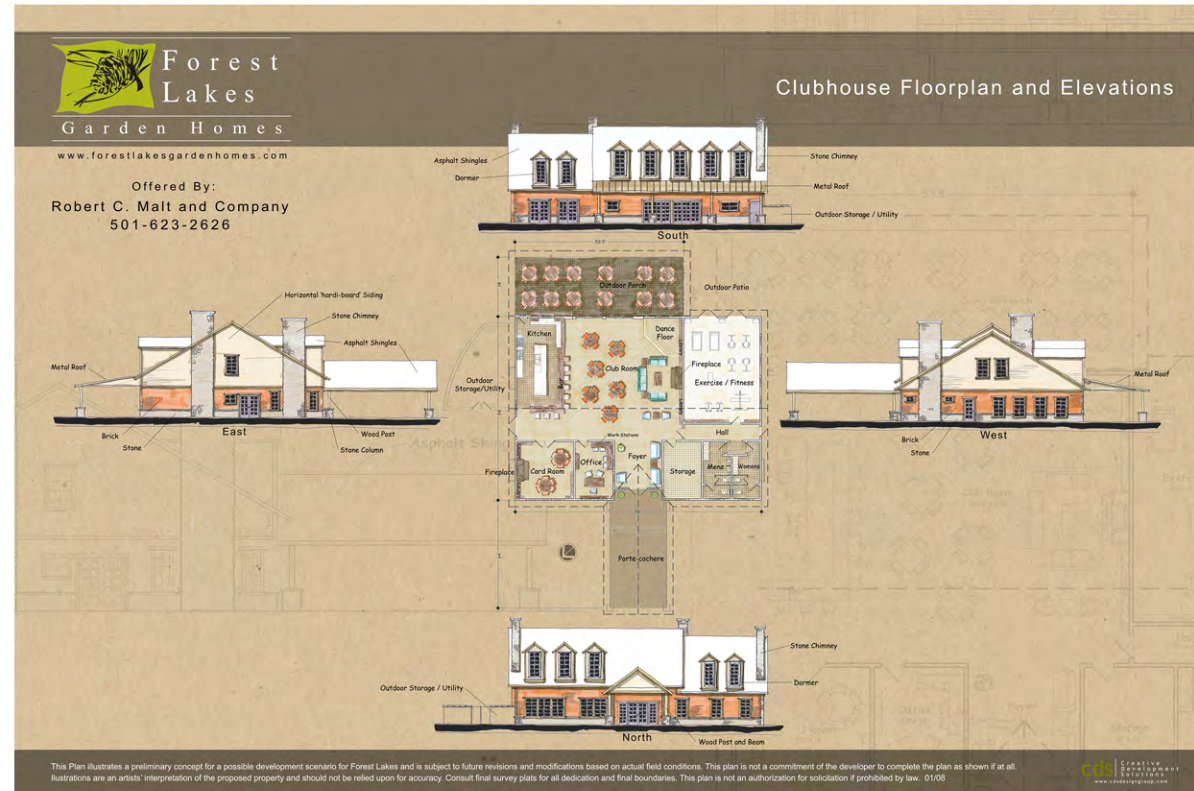
Within the city limits of Hot Springs, Phase 1 of the Forest Lakes Garden Home Community is approximately 50 Acres consisting of single and multi-family homes exclusively for 55 and older. The emphasis for this community is active lifestyle living including walking trails, community gardens and clubhouse with fitness facilities and pool. Total build out will include an additional 115 Acres of office, residential, retail and lifestyle destinations.



Forest Lakes Clubhouse | Hot Springs, AR
(Creative Development Solutions, PA)

The primary amenity for the Forest Lakes Community. This is the conceptual floorplan and elevations for the clubhouse which included a full swing Golf Theatre, Media Room with wet bar, Library/Card Room, Billiard Room, covered outdoor dining area, outdoor fireplace, exercise room, catering kitchen and outdoor summer kitchen, two station beauty salon, clubroom with dancing, dining, and entertainment facilities.

This presentation was approximately 4'x8' to illustrate the future clubhouse building at the site location.



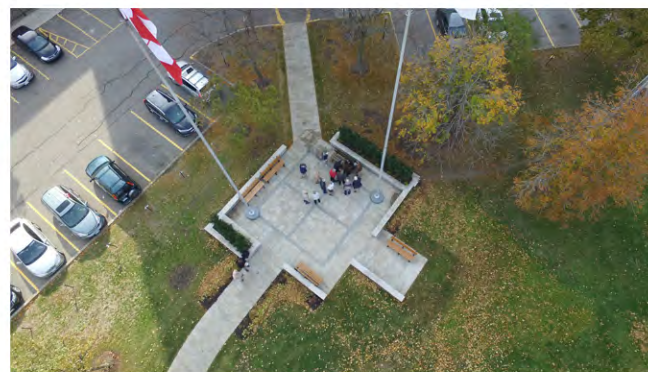
Mark Ambtman | Landscape Architect

Residence | Pittsburgh, PA
(MA-LA)



Mark Ambtman | Landscape Architect

Sculpture Garden | Brampton, Ontario
(MA-LA)



Oakhill | Asheville, NC
(Creative Development Solutions, PA)

3.73 acres with future expansion of 3.32 - A conceptual multi-family affordable housing community within the city limits of Asheville. Total buildout will be 108 units from 900s.f. (1-2 bedroom) to 1,400s.f. (2-3 bedroom). This community includes walking trails and a central park.



Mark Ambtman | Landscape Architect

Olive Square | Toronto, ON
(MEP Design Inc.)



Remington Center | Toronto, ON
(MEP Design Inc.)

Condominium (twin tower) podium landscape design.



Mixed-Use Urban Village | MI
(AE7)



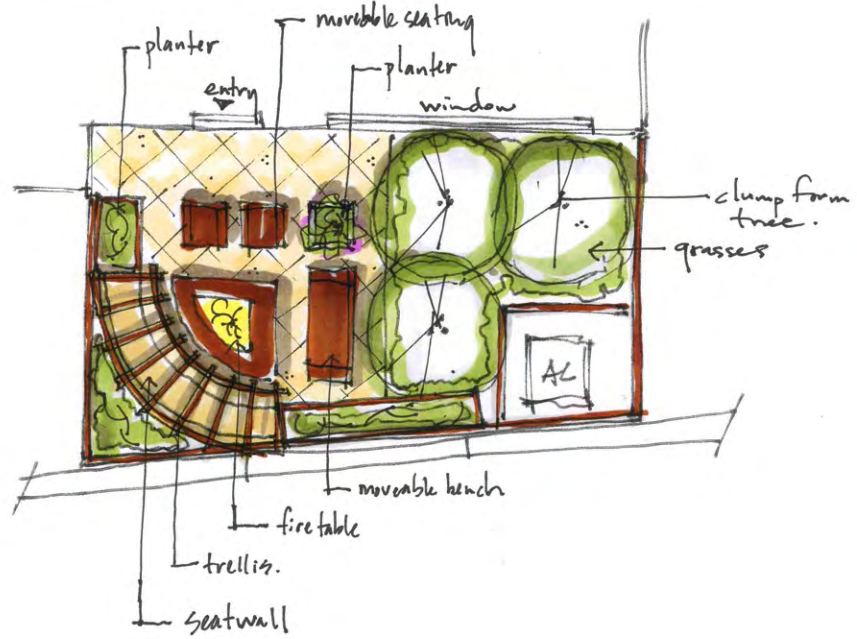
Design Option 1



Design Option 2

Mark Ambtman | Landscape Architect

Residence | Pittsburgh, PA
(MA-LA)



The Vineyards on Roaring River | Traphill, NC
(Creative Development Solutions, PA)

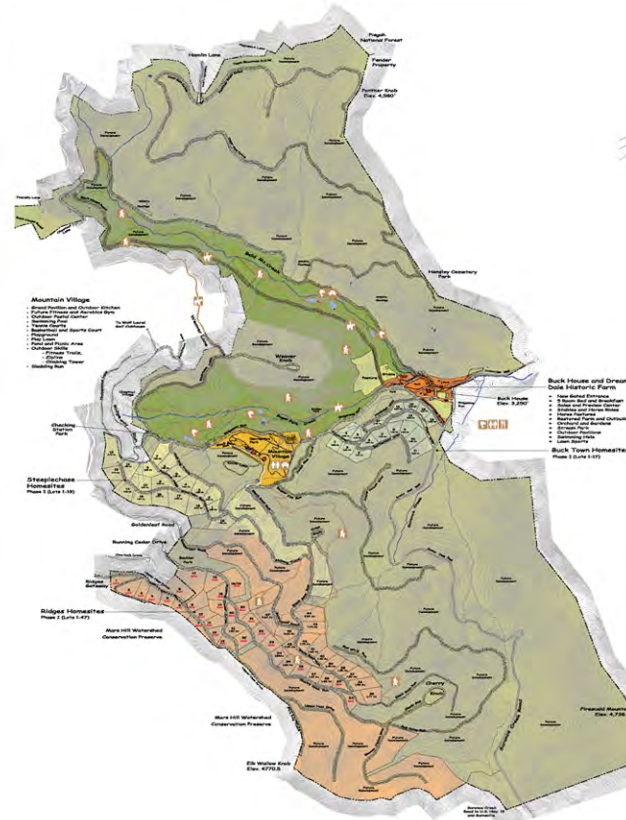
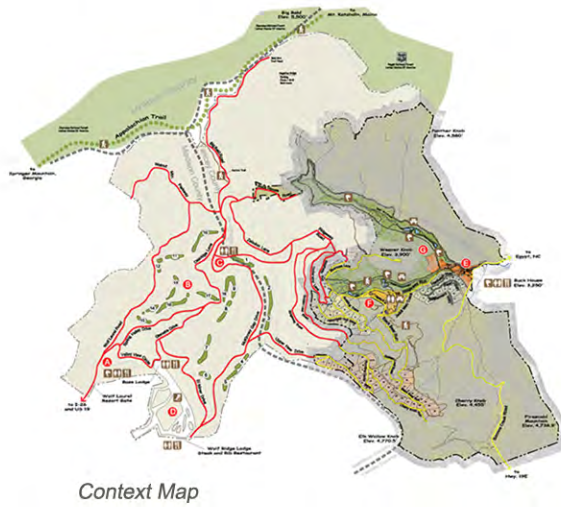
45 acre private family estate including an 11 acre vineyard, owners estate, wine tasting rooms and several single family and cottage homesites exclusive for friends and family.



Mark Ambtman | Landscape Architect

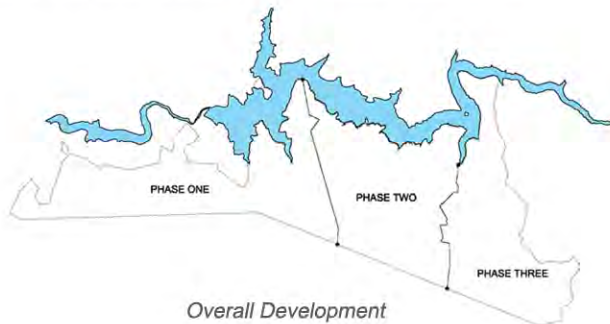
The Preserve at Wolf Laurel | Mars Hill, NC
(Creative Development Solutions, PA)

1,300 acre mountain preserve built around the Buck Family farm. 530 acres with an additional 770 acres for future development and/or conservation. An elaborate trail system links community parks and the Mountain Village to each of the residents.



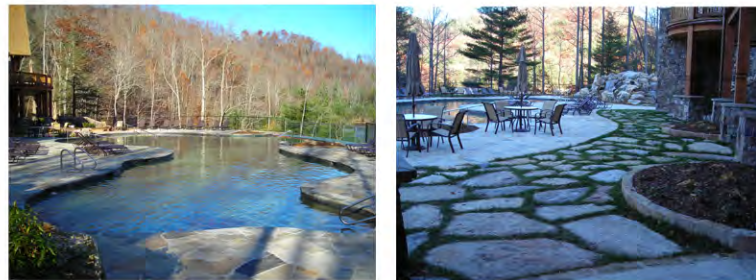
Bear Lake Reserve | Tuckaseegee, NC
(Melrose Design Group, PA)

2,100 acre master planned resort community located on the 476 acre Bear Creek Lake. This rural community at total buildout would yield more than 1,000 units including cottage, condominium and single family homes. The emphasis was on the extensive network of trails and parks linking all of the residents to the amenities including the Lake Clubhouse and 9-hole Nicklaus Golf course.



Lake Clubhouse | Tuckaseegee, NC (Bear Lake Reserve)
(Melrose Design Group, PA)

Centrally located to the entire community the Lake Clubhouse serves as one of the main amenities for the residents. Responsibilities included Design Development, complete Construction Document package, Construction Observation and Administration.



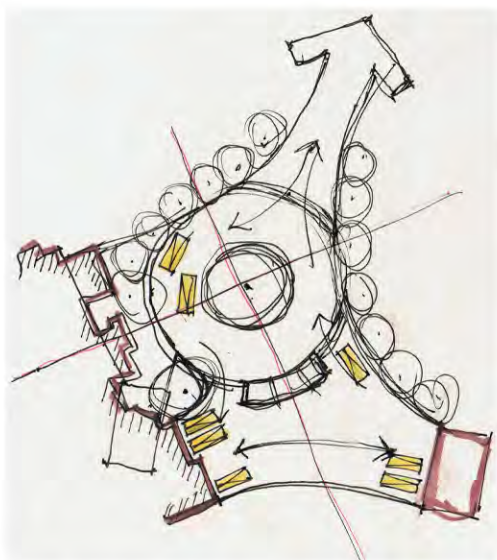
Urban Village | Yancey County, NC
 (Creative Development Solutions, PA)

+/- 15 Acre conceptual urban village study including Hotel, Office, Retail, Multifamily and Condominium Residences all centered around a community park.

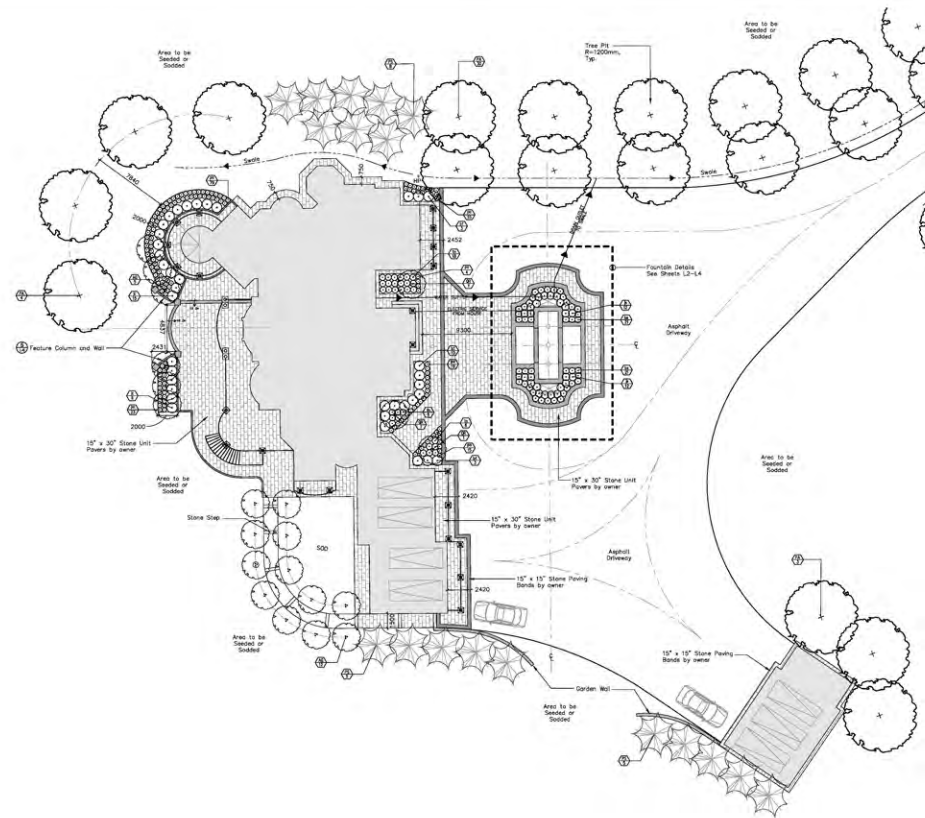


BUILDING TYPOLOGY

Building	Use	S / F	Req'd Parking
A	Hotel	16,640	80
B	Retail	12,800	80
C	Retail	4,800	35
D (2 ST.)	Office	4,800	12
E (2 ST.)	Office	7,200	24
F	Retail	7,200	36
G	Restaurant	4,800	32
H	Retail	2,200	11
I	Retail	2,000	10
J (2 ST.)	Office / Retail	16,200	64
K	Restaurant	5,600	36
L	Office / Retail	14,400	54
M	Retail	5,460	28
N (2 ST.)	Retail	8,280	40
O (2 ST.)	Retail	4,800	24
P (2 ST.)	Retail	4,800	24
Q	Restaurant	12,800	80
R (2 ST.)	Office	19,600	50
S (2 ST.)	Office / Retail	13,920	53
TOTAL		168,300	773
		Approx. Available Parking	521



Antonel Res. | Toronto, ON
(MEP Design Inc.)



Fletcher Soccer Park | Fletcher, NC
(Creative Development Solutions, PA)

Donated to the Town of Fletcher by the Arvin-Meritor Company this site will be used by the Hendersonville Soccer Association for active recreation. The site is proposed to include 13 soccer fields (6 regulation and 7 small fields) a field house for offices, storage, restrooms and concessions, picnic shelters, playgrounds, and a 1 mile loop trail. Of the total 94 acres only 51 acres will be used for active recreation while the other 43 acres will be left for conservation. With an active stream running through this portion of the site there will be an opportunity for stream restoration further enhancing the user experience.



Marketing | Logo Design

Various logo designs for development clients used for presentation and marketing materials.

